



# Blue Trillium

Landscape Architecture ▲ Sustainable Design

552 Holmes Rd, Morton, PA 19070

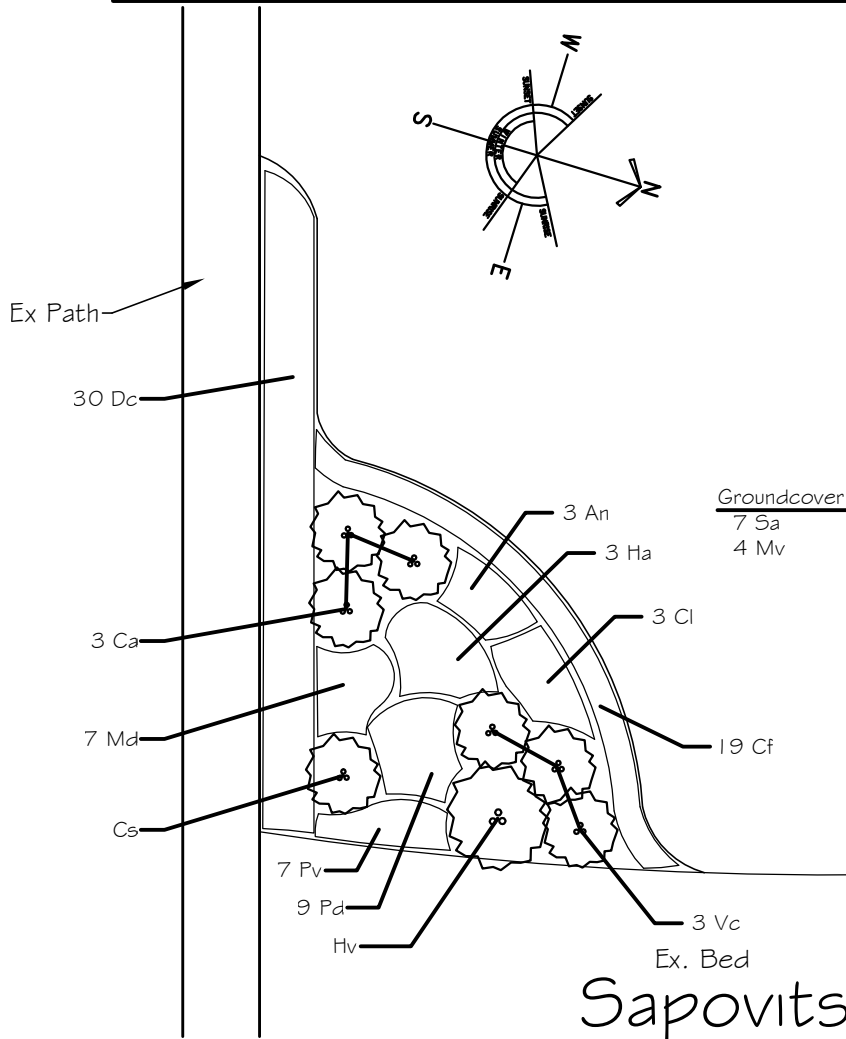
484-494-6453 www.bluetrillium.com

1023 Sycamore Mills Road

Media, PA 19063

610-892-8731

www.crcwatersheds.org



| SYMBOL            | QTY. | BOTANICAL NAME                        | COMMON NAME                               |
|-------------------|------|---------------------------------------|---|
| <b>SHRUBS</b>     |      |                                       |   |
| Ca                | 3    | Clethra alnifolia 'Sixteen Candles'   | Dwarf Sweet Pepperbush                    |
| Cs                | 1    | Cornus sericea 'Winter Flame'         | Redosier Dogwood                          |
| Hv                | 1    | Hamamelis virginiana                  | Witch-hazel                               |
| Vc                | 3    | Vaccinium corymbosum (2+ cultivars)   | Highbush Blueberry                        |
| <b>PERENNIALS</b> |      |                                       |   |
| An                | 3    | Aster novae-angliae 'Purple Dome'     | New England Aster                         |
| Cf                | 19   | Carex flaccosperma                    | Blue Wood Sedge                           |
| Cl                | 3    | Chelone lyonii 'Hot Lips'             | Pink Turtlehead                           |
| Dc                | 30   | Deschampsia cespitosa                 | Tufted Hairgrass                          |
| Ha                | 3    | Helenium autumnale                    | Dog-tooth Daisy / Sneezeweed              |
| Mv                | 4    | Mertensia virginica                   | Virginia Bluebells                        |
| Md                | 3    | Monarda didyma 'Jacob Cline'          | Bee Balm                                  |
| Pd                | 9    | Penstemon digitalis 'Husker Red'      | Red Beardtongue                           |
| Pv                | 7    | Physostegia virginiana 'Miss Manners' | Obedient Plant                            |
| Rt                | 5    | Rudbeckia triloba                     | Three-lobed Coneflower / Brown-eyed Susan |

## Sapovits Park Entrance Rain Garden (~380 sq. ft.)

May 7, 2009

1" = 10'-0"

